



Te Rapa New-402sqm

Te Rapa New - 402 sqm

Scheduled for completion in March 2020

- High stud tilt slab unit
- 292 sqm warehouse, 110 sqm office, 20 sqm canopy
- 4 on-site car parks
- Drive through access onto Arthur Porter Drive

Is your lease expiring soon? Are you looking to upgrade your premises? Do you want to
(Continued overleaf ...)

PRICE By Negotiation

VIEW By appointment
WEB www.eves.co.nz/ehvc155r

Paul Knox

M 021 669 010

B 07 903 8039

E paul.knox@eves.co.nz

Web paulknox.eves.co.nz

Property Address: 35 Clem Newby Road, Te Rapa

Legal Description:

Continued: company's profile whilst providing efficiencies of operation. Call now to discuss your requirements.

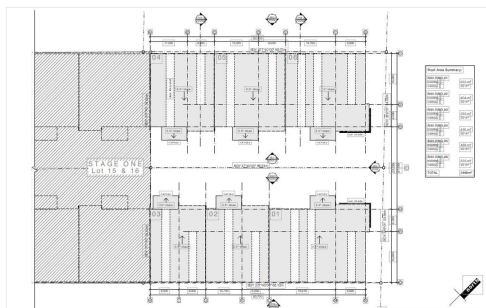


Image to follow



Image to follow



*Please note: the floor area and property information was sourced from Property Guru and/or LINZ.



Map data not available



The buyer's guide to real estate in the Waikato.

Pick up a free copy from your local EVEs office today.

View online at:
evesproperty.co.nz

Out Now!

Looking for a mortgage?

Talk to the team at Rothbury now – our mortgage brokers are qualified, experienced and committed to providing a friendly service to assist you along your journey.

For all your lending needs:

- First home buyers
- Refinances
- Top-ups
- Investors
- Construction Loans
- Re-fixes



Call us now 0800 33 34 35 Rothbury Financial Services Ltd. Level One, 247 Cameron Rd, Tauranga

rothbury.co.nz/life